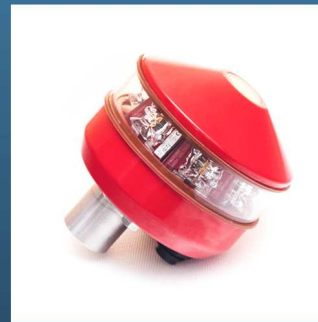


N50 Obstruction light



N-50 Obstruction light

N-50 low intensity lighting fixture is designed to provide easy installation under severe altitude conditions while maintaining the quality and performance standards of obstruction lighting. It is due to the simplicity of replacement of incandescent beacons operating in existing systems that the beacon may be used in every type of electrical obstruction light installation. The beacon is used for marking tall structures preventing risk in air traffic (of over 45 m in height), warning-red light colored, utilizing the LED based FAA L864 unit. The low intensity lighting fixture is built with the use of state-of-the-art technologies. This compact-built and efficient L864 beacon is designed as a highly-competitive solution for obstruction lighting products which emit a highly-focused beam of light (minimum scattering angle). This obstruction lighting beacon features a resilient composite structure with high ingress protection rating (IP 65). Its low power consumption allows for a substantial reduction of operating costs. Owing to its reliability and capability to operate under severe operating conditions, the unit requires no maintenance for many applications.

OBSTRUCTION LIGHT DRIVER

The N-50 low intensity obstruction light beacon has designed to cooperate with additional external controller allow to drive lights in constant mode. Additionally distribution board, with build in flash controller is provide in a discharge protection type II or I+II (input and output of distribution board), photocell controller (external or internal), over current protection (mainly type B, with carry on selectivity), calibrating current monitoring and much more interesting solutions, dependent on customer's requirements.

N50 Obstruction light



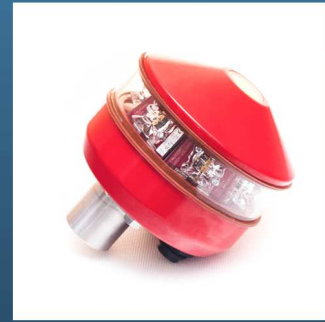
FEATURES AND BENEFITS

- 5 years warranty.
- Designed to replace standard incandescent lighting fixtures installed on chimneys, wind power plants, radio masts, etc.
- Composite structure with high ingress protection rating (IP 65).
- Designed to operate in continuous mode.
- Low energy consumption of up to 5W.
- Low weight, less than 3.5 kg.
- No EMI/RFI interference.
- Long service life - estimated at 100,000 hours.
- High vibrations and shocks resistance.
- Easy installation on the supporting structure of the gallery (optional).
- Integrated T2 type (40 kA) overvoltage protection N-50.

OPERATING CONDITIONS

The N-50 low intensity obstruction light beacon is designed to ensure maximum durability under severe operating conditions experienced around the world. Permissible operating conditions: temperature range: -55°C to +55°C, direct sunlight (high UV resistance), ingress protection rating: IP 65, resistant to acid media.

N50 Obstruction light



MATERIALS

The stainless body of this type of low intensity beacon is made of a resistant light metal alloy with anti-corrosion protection. The dome is made of toughened UV resistant glass. The parts of the unit are held together using A4 alloy steel elements to provide a structure with IP 65 ingress protection.

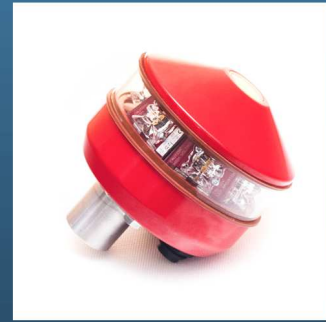
SPECIFICATIONS

- Lot number: N-50
- Maximum Weight: 3.5kg
- Package dimension: 15x15x15 [cm]

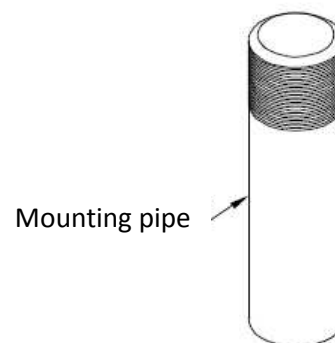
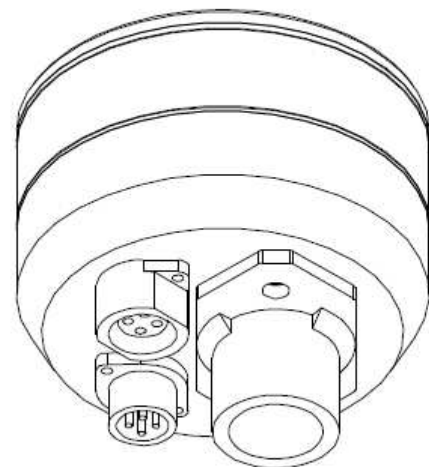
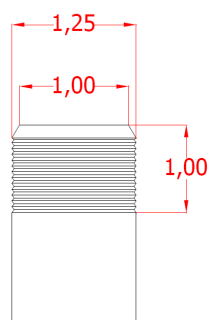
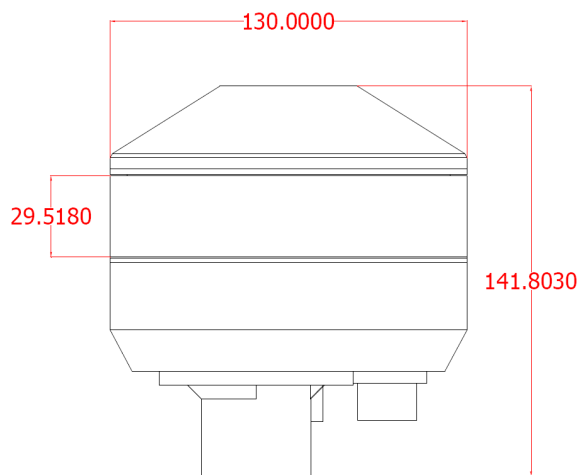
The unit utilizes a quick-release coupling with IP 65 ingress protection rating to ensure easy installation of the beacon on tall structures. This solution allows elimination of junction boxes. The design of the beacon incorporates class II overvoltage protection (formerly class C, 40 kA).

| Series N-50 | Voltage [V] | | | Current [A] | | |
|---------------------|-------------|-------|-----|-------------|---------|-------|
| | Min | Typ | Max | Min | Typ | Max |
| 120/230 VAC/VDC | 207 | 230 | 253 | 0,015 | 0,02 | 0,025 |
| 12 up to 48 VAC/VDC | 11 | 12-24 | 48 | 0,3 | 0,3-0,5 | 0,5 |

N50 Obstruction light



DIMENSIONS



N50 Obstruction light

